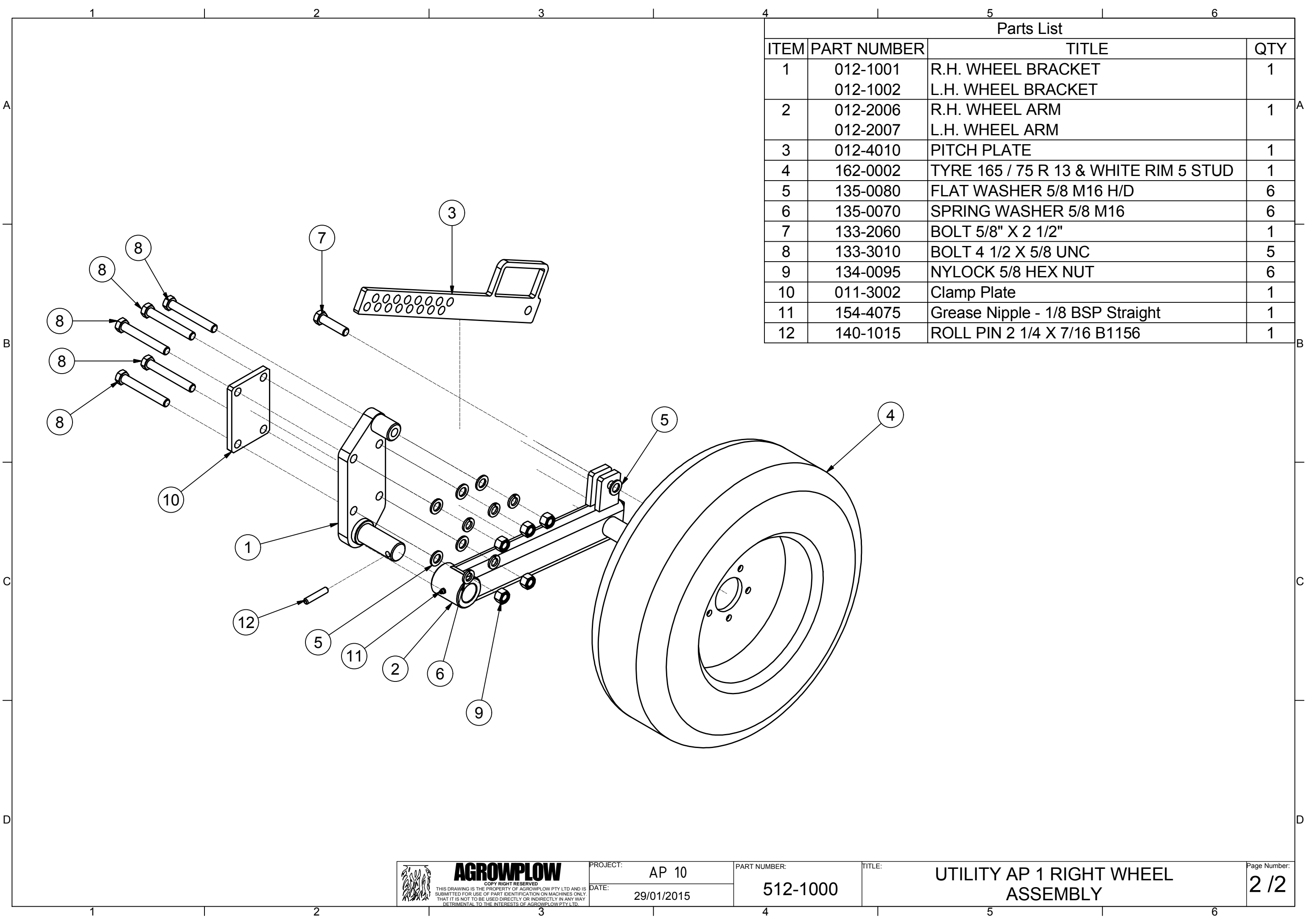


Parts List			
ITEM	PART NUMBER	TITLE	QTY
1	512-3001	7S AP 10 Frame - WA	1
2	120-1006	100 X 100 RIGID SHANK ASSEMBLY	7
3	140-0004	PIN TOP CYLINDER B81	1
4	140-0003	LOWER PIN CAT 2 B216	2
5	140-0039	LYNCH PIN	3
6	600-4006	TOOLBOX TB-100	1
7	130-4012	U-BOLT 150 X 120 X 1/2"	2
8	134-0070	1/2" NUT	4
9	134-0050	1/2" SPRING WASHER	4
10	134-0060	1/2" FLAT WASHER	4
11	600-4015	BLUE SPRAY PAINT	1
12	002-4051	BLADE TOOL - CAST	1
13	050-1001	UTILITY AP 1 RIGHT WHEEL ASSEMBLY	1
14	050-1002	UTILITY AP 1 LEFT WHEEL ASSEMBLY	1
15	141-4011	SHEAR PIN & 2 x CLIPS	7

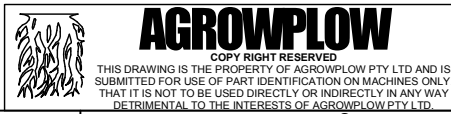
SHANK OPTIONS:
 100 x 100 RIGID SHANK
 100 x 100 RIGID SHANK WITH COULTER

FOR ANY SHANK STYLE'S PLEASE
 REFER TO THE SHANK BOOK.

SPRAY PAINT, SHEAR PINS AND BLADE
 TOOL ARE PLACED INTO TOOLBOX.



Parts List			
ITEM	PART NUMBER	TITLE	QTY
1	012-1001	R.H. WHEEL BRACKET	1
	012-1002	L.H. WHEEL BRACKET	
2	012-2006	R.H. WHEEL ARM	1
	012-2007	L.H. WHEEL ARM	
3	012-4010	PITCH PLATE	1
4	162-0002	TYRE 165 / 75 R 13 & WHITE RIM 5 STUD	1
5	135-0080	FLAT WASHER 5/8 M16 H/D	6
6	135-0070	SPRING WASHER 5/8 M16	6
7	133-2060	BOLT 5/8" X 2 1/2"	1
8	133-3010	BOLT 4 1/2 X 5/8 UNC	5
9	134-0095	NYLOCK 5/8 HEX NUT	6
10	011-3002	Clamp Plate	1
11	154-4075	Grease Nipple - 1/8 BSP Straight	1
12	140-1015	ROLL PIN 2 1/4 X 7/16 B1156	1



PROJECT: AP 10
 DATE: 29/01/2015

PART NUMBER: 512-1000

TITLE: UTILITY AP 1 RIGHT WHEEL ASSEMBLY

Page Number: 2 / 2

COPY RIGHT RESERVED
 THIS DRAWING IS THE PROPERTY OF AGROWFLOW PTY LTD AND IS
 SUBMITTED FOR USE OF PART IDENTIFICATION ON MACHINES ONLY.
 THAT IT IS NOT TO BE USED DIRECTLY OR INDIRECTLY IN ANY WAY
 DETRIMENTAL TO THE INTERESTS OF AGROWFLOW PTY LTD.